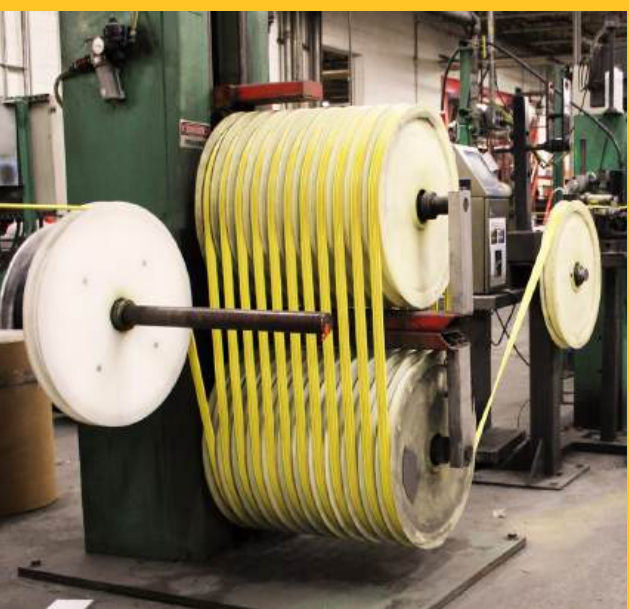
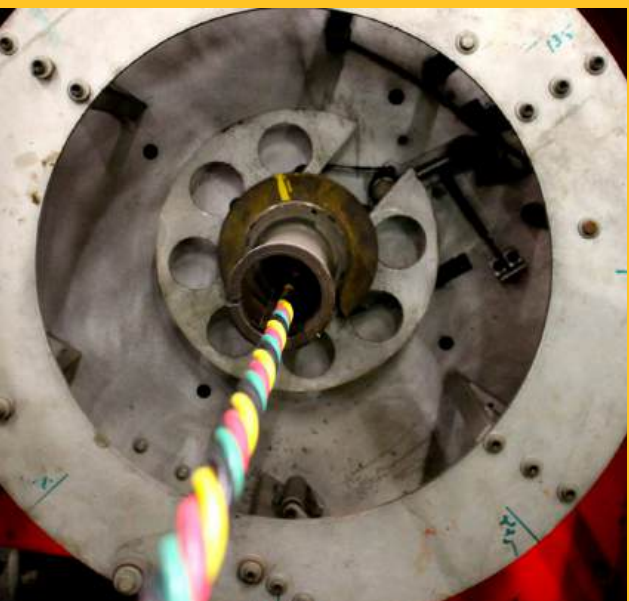


KALAS | PUMP CABLE



DELIVERING DEPENDABILITY FOR MORE THAN HALF A CENTURY



Kalas is a **full-service manufacturer** with 60 years of experience. We are strategically positioned to deliver **unprecedented quality cable** & **value-add solutions** to the welding, oil, water well & gas markets.



**CUSTOM PROGRAMS AND
PERSONALIZED SERVICES
TO MEET YOUR NEEDS.**



SUPERIOR MATERIAL CONTROL

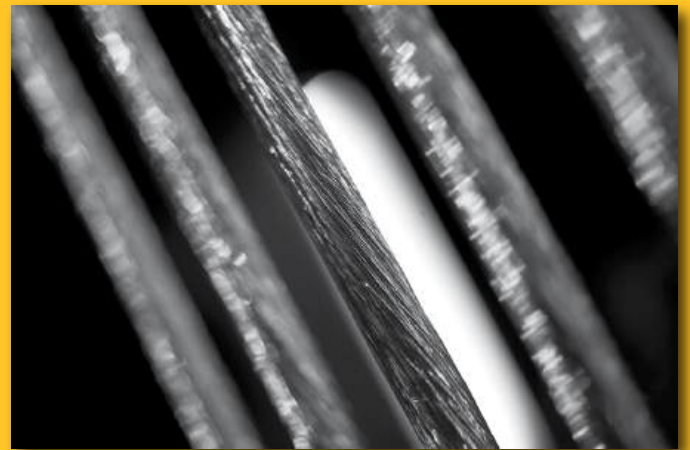
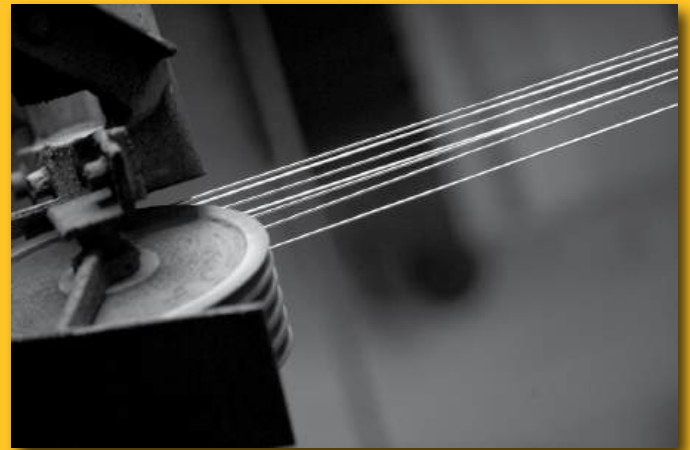
OWNING EACH STAGE OF
the production process;

DRAWN COPPER fabricated
from 5/16" copper rod

**40+ MILLION POUNDS OF
COPPER** processed annually

15 state-of-the-art
EXTRUSION LINES

Custom and competitive
VALUE-ADD SOLUTIONS



STRATEGIC VERTICAL INTEGRATION

1/0 & 2/0 HEAVY-DUTY SUBMERSIBLE PUMP CABLE



FEATURES

- Operating temperature range -40° C to 75° C
- Resistant to acid, abrasion, alkalis, flame, gas, and oil
- Water and sunlight resistant
- Cable footage is sequentially marked
- Cut to length available
- Special packaging is available upon request

APPLICATIONS

- For wiring within the casing of deep well submersible water pumps

CONSTRUCTION

Annealed bare stranded copper conductors PVC insulated and run parallel with a PVC black jacket to form a 75°C 600 Volt Multi-Conductor Submersible Pump Cable. UL Listed per UL 83 Type THW as Deep Well Submersible Pump Cable.



GAUGE	STRANDING	INSULATION THICKNESS		JACKET THICKNESS		NOMINAL O.D.		STANDARD PACKAGE	SHIPPING WEIGHT -LBS/ 1000 FT.	PART NUMBER
		in	mm	in	mm	min. x maj. in	min. x maj. mm			
1/0 - 3 with #6 GND	19/.0745"(1/0) – 19/.0372"(6ga)	0.080	2.032	0.060	1.524	0.661 x 2.049	16.790 x 52.045	500 or 1000	1637	440818.XX.001
2/0 - 3 with #6 GND	19/.0837"(2/0) – 19/.0372"(6ga)	0.080	2.032	0.060	1.524	0.715 x 2.175	18.161 x 55.245	500 or 1000	1938	440819.XX.001

*Product is available in additional gauges. Visit kalaswire.com or contact your customer service representative for availability.

KALAS MAILING ADDRESS
167 Greenfield Road
Lancaster, PA 17601

TULSA WAREHOUSE
1810 East Jasper St.
Tulsa, Oklahoma 74110

KALASWIRE.COM
P 717-336-5575

ISO 9001:2015 CERTIFIED
ISO 14001:2015 CERTIFIED

MADE IN USA



RoHS: Kalas products are compliant with the requirements of the RoHS directive (2011/65/EU as amended).

HD JACKETED SUBMERSIBLE PUMP CABLE



FEATURES

- Operating temperature range -40° C to 75° C
- Resistant to acid, abrasion, alkalis, flame, gas, and oil
- Water and sunlight resistant
- Cable is sequentially marked
- Special packaging is available upon request

CONSTRUCTION

Annealed bare stranded copper conductors PVC insulated and run parallel with a PVC black jacket to form a 75°C 600 Volt Multi-Conductor Submersible Pump Cable. UL Listed per UL 83 Type THW as Deep Well Submersible Pump Cable.

APPLICATIONS

- For wiring within the casing of deep well submersible water pumps

GAUGE	STRANDING	INSULATION THICKNESS		JACKET THICKNESS		NOMINAL O.D.		STANDARD PACKAGE	SHIPPING WEIGHT ~LBS/ 1000 FT.	PART NUMBER
		in	mm	in	mm	min. x maj. in	min. x maj. mm			
14/2 with GND	19/.0147"	0.045	1.143	0.045	1.143	0.262 x 0.594	6.655 x 15.088	500 or 1000	110	440411.XX.001
14/3 with GND	19/.0147"	0.045	1.143	0.045	1.143	0.262 x 0.762	6.655 x 19.355	500 or 1000	136	440211.XX.001
12/2 with GND	19/.0185"	0.045	1.143	0.045	1.143	0.271 x 0.680	6.883 x 17.272	500 or 1000	143	440412.XX.001
12/3 with GND	19/.0185"	0.045	1.143	0.045	1.143	0.275 x 0.840	6.985 x 21.336	500 or 1000	187	440212.XX.001
10/2 with GND	19/.0234"	0.045	1.143	0.045	1.143	0.314 x 0.754	7.976 x 19.152	500 or 1000	200	440413.XX.001
10/3 with GND	19/.0234"	0.045	1.143	0.045	1.143	0.314 x 0.988	7.976 x 25.095	500 or 1000	267	440213.XX.001
8/3 with #10 GND	19/.0295" (#8 ga) – 19/.0234" (#10 ga)	0.060	1.524	0.050	1.27	0.375 x 1.135	9.525 x 28.829	500 or 1000	394	440214.XX.001
6/3 with #8 GND	19/.0372" (#6 ga) – 19/.0295" (#8 ga)	0.060	1.524	0.050	1.27	0.410 x 1.320	10.414 x 33.528	500 or 1000	560	440215.XX.001
4/3 with #8 GND	19/.0469" (#4 ga) – 19/.0295" (#8 ga)	0.060	1.524	0.050	1.27	0.468 x 1.465	11.887 x 37.211	500 or 1000	744	440216.XX.001
2/3 with #6 GND	19/.0591" (#2 ga) – 19/.0372" (#6 ga)	0.060	1.651	0.065	1.27	0.564 x 1.731	14.326 x 43.967	500 or 1000	1072	440217.XX.001

KALAS MAILING ADDRESS
167 Greenfield Road
Lancaster, PA 17601

TULSA WAREHOUSE
1810 East Jasper St.
Tulsa, Oklahoma 74110

KALASWIRE.COM
P 717-336-5575

ISO 9001:2015 CERTIFIED
ISO 14001:2015 CERTIFIED

MADE IN USA



RoHS: Kalas products are compliant with the requirements of the RoHS directive (2011/65/EU as amended).

FLAT PARALLEL SUBMERSIBLE PUMP CABLE



FEATURES

- Operating temperature range -40° C to 75° C
- Resistant to acid, abrasion, alkalis, flame, gas, and oil
- Water and sunlight resistant
- Cable is sequentially marked
- Special packaging is available upon request

CONSTRUCTION

Annealed bare stranded copper conductors insulated with PVC in a flat parallel construction to form a 75°C 600 Volt Multi-Conductor Submersible Pump Cable. UL Listed per UL 83 Type THW as Deep Well Submersible Pump Cable.

APPLICATIONS

- For wiring within the casing of deep well submersible water pumps

GAUGE	STRANDING	INSULATION THICKNESS		NOMINAL O.D.		STANDARD PACKAGE	SHIPPING WEIGHT -LBS/ 1000 FT.	PART NUMBER
		in	mm	min. x maj. in	min. x maj. mm			
14/2 with GND	7/.0242"	0.045	1.143	0.166 x 0.588	4.213 x 14.935	500 or 1000	77	440111.XX.005
14/3 with GND	7/.0242"	0.045	1.143	0.166 x 0.769	4.213 x 19.533	500 or 1000	92	440112.XX.005
12/2 with GND	7/.0305"	0.045	1.143	0.190 x 0.610	4.826 x 15.494	500 or 1000	104	440113.XX.005
12/3 with GND	7/.0305"	0.045	1.143	0.190 x 0.815	4.826 x 20.701	500 or 1000	139	440114.XX.005
10/2 with GND	7/.0385"	0.045	1.143	0.215 x 0.685	5.461 x 17.399	500 or 1000	151	440115.XX.005
10/3 with GND	7/.0385"	0.045	1.143	0.215 x 0.920	5.461 x 23.368	500 or 1000	198	440116.XX.005
8/2 with #10 GND	19/.0295" – 7/.0385"	0.060	1.524	0.279 x 0.873	7.087 x 22.174	500 or 1000	197	440117.XX.005
8/3 with #10 GND	19/.0295" – 7/.0385"	0.060	1.524	0.279 x 1.237	7.087 x 31.420	500 or 1000	289	440118.XX.005
6/3 with #8 GND	19/.0372" – 19/.0295"	0.060	1.524	0.320 x 1.357	8.128 x 34.468	500 or 1000	428	440119.XX.005
4/3 with #8 GND	19/.0469" – 19/.0295"	0.060	1.524	0.370 x 1.550	9.398 x 39.37	500 or 1000	637	440120.XX.005

KALAS MAILING ADDRESS
167 Greenfield Road
Lancaster, PA 17601

TULSA WAREHOUSE
1810 East Jasper St.
Tulsa, Oklahoma 74110

KALASWIRE.COM
P 717-336-5575

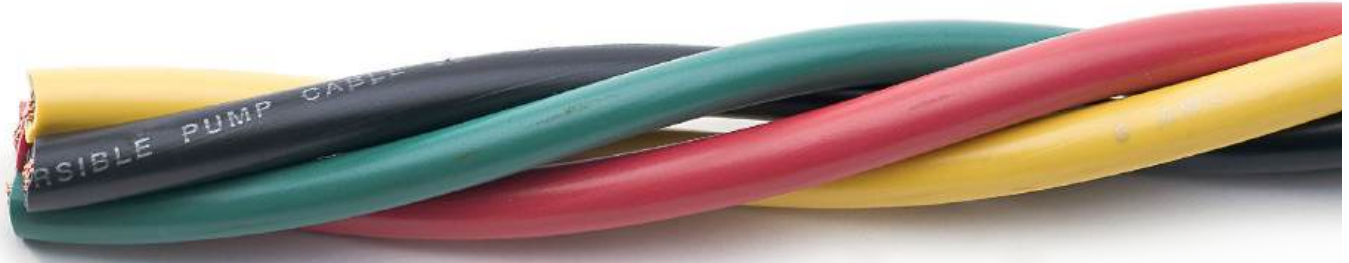
ISO 9001:2015 CERTIFIED
ISO 14001:2015 CERTIFIED

MADE IN USA



RoHS: Kalas products are compliant with the requirements of the RoHS directive (2011/65/EU as amended).

TWISTED PVC SUBMERSIBLE PUMP CABLE



FEATURES

- Operating temperature range -40° C to 75° C
- Resistant to acid, abrasion, alkalis, flame, gas, and oil
- Water and sunlight resistant
- Special packaging is available upon request

CONSTRUCTION

Annealed bare solid or stranded copper conductors insulated with PVC and twisted to form a 75°C 600 Volt Multi-Conductor Submersible Pump Cable. UL Listed per UL 83 Type THW as Deep Well Submersible Pump Cable.

APPLICATIONS

- For wiring within the casing of deep well submersible water pumps

GAUGE	STRANDING	INSULATION THICKNESS		TWISTED NOMINAL O.D.		STANDARD PACKAGE	SHIPPING WEIGHT -LBS/ 1000 FT.	PART NUMBER
		in	mm	in	mm			
14/2 with GND	Solid/.0641"	0.045	1.143	0.339	8.611	500 or 1000	67	440011.XX.999
14/3 with GND	Solid/.0641"	0.045	1.143	0.380	9.652	500 or 1000	89	440012.XX.999
12/2 with GND	Solid/.0808"	0.045	1.143	0.369	9.373	500 or 1000	94	440013.XX.999
12/3 with GND	Solid/.0808"	0.045	1.143	0.414	10.516	500 or 1000	125	440014.XX.999
10/2 with GND	Solid/.1019"	0.045	1.143	0.421	10.693	500 or 1000	136	440015.XX.999
10/3 with GND	Solid/.1019"	0.045	1.143	0.472	11.989	500 or 1000	182	440016.XX.999
8/2 with #10 GND	19/.0295" – solid (.1019")	0.060	1.524	0.538	13.665	500 or 1000	197	440017.XX.999
8/3 with #10 GND	19/.0295" – solid (.1019")	0.060	1.524	0.608	15.443	500 or 1000	273	440018.XX.999
6/3 with #8 GND	19/.0372" – 19/.0295"	0.060	1.524	0.728	18.491	500 or 1000	413	440019.XX.999
4/3 with #8 GND	19/.0469" – 19/.0295"	0.060	1.524	0.819	20.803	500 or 1000	584	440020.XX.999

KALAS MAILING ADDRESS
167 Greenfield Road
Lancaster, PA 17601

TULSA WAREHOUSE
1810 East Jasper St.
Tulsa, Oklahoma 74110

KALASWIRE.COM
P 717-336-5575

ISO 9001:2015 CERTIFIED
ISO 14001:2015 CERTIFIED

MADE IN USA



RoHS: Kalas products are compliant with the requirements of the RoHS directive (2011/65/EU as amended).

ICE BLUE JACKETED SUBMERSIBLE PUMP CABLE



FEATURES

- Operating temperature range -65° C to 90° C
- Resistant to acid, abrasion, alkalis, gas, and oil
- Water and sunlight resistant
- Cable is sequentially marked
- Special packaging is available upon request

CONSTRUCTION

Annealed bare stranded copper conductors run parallel with TPE insulation and blue jacket to form a 90°C Dry 75°C Wet 600 Volt Multi-Conductor Submersible Pump Cable. This product is UL Listed.

APPLICATIONS

- For wiring within the casing of deep well submersible water pumps

GAUGE	STRANDING	INSULATION THICKNESS		JACKET THICKNESS		NOMINAL O.D.		STANDARD PACKAGE	SHIPPING WEIGHT -LBS/ 1000 FT.	SHIPPING WEIGHT -LBS/ 1000 FT.
		in	mm	in	mm	min. x maj. in	min. x maj. mm			
12/2 with GND	65/.010"	0.030	7.62	0.030	7.62	0.225 x 0.528	5.715 x 13.411	500 or 1000	93	450005.XX.017
12/3 with GND	65/.010"	0.030	7.62	0.030	7.62	0.224 x 0.692	5.689 x 17.577	500 or 1000	121	450006.XX.017
10/2 with GND	105/.010"	0.030	7.62	0.030	7.62	0.265 x 0.610	6.731 x 15.494	500 or 1000	137	450008.XX.017
10/3 with GND	105/.010"	0.030	7.62	0.030	7.62	0.250 x 0.796	6.35 x 20.218	500 or 1000	188	450009.XX.017
8/3 with #10 GND	19/.0295" – 19/.0234"	0.045 (#8 ga) 0.030 (#10 ga)	1.143 7.62	0.040	1.016	0.330 x 0.987	8.382 x 25.069	500 or 1000	287	450014.XX.017

KALAS MAILING ADDRESS
167 Greenfield Road
Lancaster, PA 17601

TULSA WAREHOUSE
1810 East Jasper St.
Tulsa, Oklahoma 74110

KALASWIRE.COM
P 717-336-5575

ISO 9001:2015 CERTIFIED
ISO 14001:2015 CERTIFIED

MADE IN USA



RoHS: Kalas products are compliant with the requirements of the RoHS directive (2011/65/EU as amended).

MULTI CONDUCTOR UNDERGROUND FEEDER CABLE



FEATURES

- Operating temperature range -25° C to 90° C
- Direct burial
- Sunlight resistant
- Water and sunlight resistant
- Special packaging is available upon request

CONSTRUCTION

Annealed bare copper insulated with high grade PVC. UL listed for use in underground feeder and branch circuits. Temperature rating -25° C to 90° C 600 Volts. Meets the requirements of UL 493 and UL-83.

APPLICATIONS

– For all usages defined in Articles 340 of the National Electrical Code (NEC), interior wiring in wet, dry or corrosive locations at temperatures not to exceed 90°C (with ampacity limited to that for 60°C conductors) specified by the NEC, and any application requiring direct sun,

GAUGE	STRANDING	INSULATION THICKNESS				NOMINAL O.D.		STANDARD PACKAGE	SHIPPING WEIGHT -LBS/ 1000 FT.	PART NUMBER
		pvc in	pvc mm	nylon in	nylon mm	min. x maj. in	min. x maj. mm			
14/2 with GND	Solid	0.015	0.381	0.004	0.10	0.185 x 0.385	4.699 x 9.779	250/1000	53	460011.XX.010
14/3 with GND	Solid	0.015	0.381	0.004	0.10	0.185 x 0.575	4.699 x 14.61	250/500/1000	93	460012.XX.010
12/2 with GND	Solid	0.015	0.381	0.004	0.10	0.195 x 0.415	4.953 x 10.54	250/500/1000	75	460013.XX.010
12/3 with GND	Solid	0.015	0.381	0.004	0.10	0.195 x 0.620	4.953 x 15.75	250/500/1000	134	460014.XX.010
10/2 with GND	Solid	0.020	0.508	0.004	0.10	0.230 x 0.460	5.842 x 11.68	250/500/1000	140	460015.XX.010
10/3 with GND	Solid	0.020	0.508	0.004	0.10	0.230 x 0.690	5.842 x 17.53	250/500/1000	194	460016.XX.010
8/2 with #10 GND	7 Strand	0.030	7.62	0.005	0.127	0.320 x 0.620	8.128 x 15.75	500/1000	213	460017.XX.010
8/3 with #10 GND	7 Strand	0.030	7.62	0.005	0.127	0.320 x 0.990	8.128 x 25.15	500/1000	330	460018.XX.010
6/2 with #10 GND	7 Strand	0.030	7.62	0.005	0.127	0.385 x 0.800	9.779 x 20.32	500/1000	305	460019.XX.010
6/3 with #10 GND	7 Strand	0.030	7.62	0.005	0.127	0.385 x 1.200	9.779 x 30.48	500/1000	449	460020.XX.010

KALAS MAILING ADDRESS
167 Greenfield Road
Lancaster, PA 17601

TULSA WAREHOUSE
1810 East Jasper St.
Tulsa, Oklahoma 74110

KALASWIRE.COM
P 717-336-5575

ISO 9001:2015 CERTIFIED
ISO 14001:2015 CERTIFIED

MADE IN USA



RoHS: Kalas products are compliant with the requirements of the RoHS directive (2011/65/EU as amended).

KALAS | PUMP CABLE

TAILORED SOLUTIONS

Full service manufacturing & value-add capabilities to meet your needs.



- 24-hour shipping
- Coast-to-coast inventory
- Sequentially marked cable
- Custom packaging & print capabilities



KALAS | PUMP CABLE

UNMATCHED QUALITY

Knowledge and expertise with +30 years of industry leadership and service to the well water, oil and gas markets.

Responsive copper management

Controlled vertical integration

Quality assured shop floor control

- ISO
- UL
- RoHS

Best in class audit performance



KALAS | PUMP CABLE

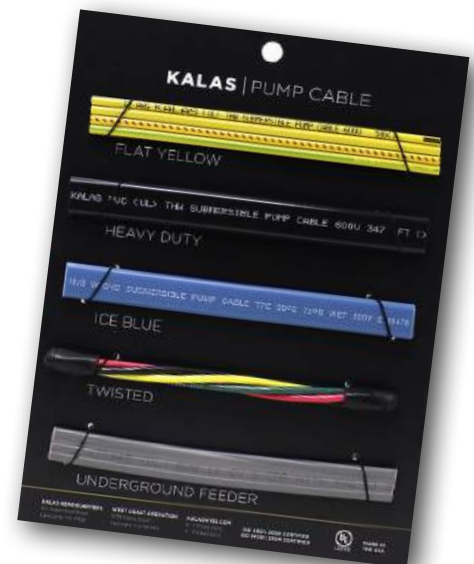
CUSTOM COLLATERAL

Selling tools tailor-made to the needs of our valued partners

Product data sheets to highlight
product specifications and
performance features



Display boards with removable
pump cable samples to showcase in
retail locations



LOCATIONS

Kalas has facilities around the country; from Denver & Lancaster, PA to warehouses in the central and western states. With four manufacturing facilities, two value-add locations, a corporate headquarters and a conference center, Kalas is able to ensure integration during all stages of the production process as well as offer customers superior service with a wide range of capabilities.



MAILING ADDRESS & CORPORATE OFFICES

167 Greenfield Road, Lancaster, PA 17601

Corporate Offices and Engineered Terminated Battery Cable Division



KALAS CORPORATE (KC)

80 Denver Road, Denver, PA 17517

Velocity Center and Corporate Offices



PLANT #1 (K1)

25 Main Street, Denver, PA 17517

Copper Rod Mill



PLANT #2 (K2)

86 Denver Road, Denver, PA 17517

Insulation Extrusion, Value-Add Assemblies

WAREHOUSE LOCATION

Tulsa Warehouse

1810 East Jasper St.
Tulsa, Oklahoma 74110

Available Everywhere You Need Us

WWW.KALASWIRE.COM

PRODUCTS AT A GLANCE

Products listed are common Kalas products; other products are available upon request.
Please contact sales or customer service for your special requests.



MACHINE TOOL WIRE (MTW), TEW & TR

MTW PVC 90°C 600 Volts #18 – 500 MCM	COIL LEAD WIRE CL1251 XLPE 125°C 600 Volts 18 AWG – 4/0	TEW PVC 105°C 600 Volts #18 – 500 MCM	TR32 PVC 90°C 1400 Volts #18 – #10	TR64 PVC 90°C 600 Volts #18 – #14
--	---	---	--	---

INDUSTRIAL POWER

TOUGHFLEX™ EPDM WELDING CABLE

EPDM Rubber
-50°C to 105°C
600 Volts
#8 – 250 MCM

GENFLEX™ TYPE SC ENTERTAINMENT CABLE

CPE
-50°C to 105°C
600 Volts
#8 – 250 MCM
NEC 520, 525, 530
UL 1680, CSA PPC 22.2 - 96, c(UL)

GENFLEX™ TYPE W PORTABLE POWER CABLE

CPE Jacket, EPDM insulation
-40°C to 90°C Dry; 90°C Wet
2000 Volts
#8 – 4/0
NEC 400, NFPA 70
UL 1650, CSA PPC 22.2 - 96
MSHA Flame Test
Sunlight Resistant

FLEXWHIP™ WELDING CABLE

EPDM Rubber
-50°C to 105°C
600 Volts
#2 – 2/0

12 GAUGE/14 CONDUCTOR ENTERTAINMENT LIGHTING CABLE

PVC Jacket, PVC Innings
-40°C to 105°C
600 Volts

SUBMERSIBLE PUMP CABLE

PVC FLAT PARALLEL PUMP WITH GROUND

75°C Dry 75°C Wet 600 Volts
14 – 10 AWG 2 or 3 conductor with ground
8 AWG 2 or 3 conductor with # 10 ground
6 – 4 AWG 3 conductor with # 8 ground

PVC FLAT HEAVY DUTY PUMP WITH GROUND

75°C Dry 75°C Wet 600 Volts
14 – 10 AWG 2 or 3 conductor with ground
8 AWG 3 conductor with # 10 ground
6 – 4 AWG 3 conductor with # 8 ground
2 AWG 3 conductor with #6 ground
1/0 - 2/0 3 conductor with #6 ground

PVC TWISTED PUMP WITH GROUND

75°C Dry 105°C Wet 600 Volts
14 – 10 AWG 2 or 3 conductor with ground
8 AWG 2 or 3 conductor with # 10 ground
6 – 4 AWG 3 conductor with # 8 ground

TPE PUMP CABLE JACKETED (ICE BLUE)

TPE 90°C Dry 75°C Wet
Low Temperature Rating -65°C
600 Volts
12/2 12/3 10/2 10/3 all with ground
8/3 with # 10 ground

UTILITY

UTILIFLEX™ GROUNDING CABLE

PVC or TPE
-40°C – 90°C
600 Volts
2 – 4/0 gauge

UTILIFLEX™ JUMPER CABLE

EPR (Thermoset Ethylene-Propylene Rubber)
2ga, 1/0, 2/0, 4/0 15kV
1/0, 2/0, 4/0 25kV
1/0 35kV

MISCELLANEOUS

LOW ENERGY CIRCUIT CABLE

ULECC/C(UL) ULEC
PVC 60°C
-25°C
30 Volts
Sunlight Resistant
10-14 AWG

TRANSFORMER LEAD WIRE

PVC 105°C
14 – 4/0 gauge

APPLIANCE WIRE (AWM)

PVC AWM UL

60°C or 105°C
300, 600 or 1000 Volts
Moisture & Oil Resistant as applicable
Flat or Round Multiple Conductor
Also available
18 AWG – 500 MCM

PVC AWM CSA

60°C – 105°C Dry 75°C Wet
300 or 600 Volts
Class I & II Group A & B
Moisture and Oil Resistant available
18 AWG – 500 MCM

SINGLE-CONDUCTOR, THERMOPLASTIC INSULATION							
1007	1011	1013	1015	1017	1024	1026	1027
1028	1032	1043	1056	1060	1228	1230	1231
1232	1235	1275	1278	1283	1284	1329	1335
1336	1337	1338	1339	1344	1383	1384	1569
10070	10269						

MULTIPLE-CONDUCTOR, THERMOPLASTIC INSULATION							
2085	2151	2184	2185	2186	2225	2240	2246
2247	2248	2249	2250	2251	2276	2277	2276
2277	2278	2279	2280	2281	2282	2283	2284
2285	2286	2287	2288	2305	2313	2377	2378
2379	2380	2381	2382	2383	2464	2576	2586
2614	2631	2654	2661	2662	2881		

SINGLE-CONDUCTOR, THERMOSET INSULATION							
3167	3182	3279	3284	3290	3295	3296	3297
3298	3300	3311	3320	3478	3484	3526	3993

KALAS MAILING ADDRESS

167 Greenfield Road
Lancaster, PA 17601

TULSA WAREHOUSE

1810 East Jasper St.
Tulsa, Oklahoma 74110

KALASWIRE.COM

P 717-336-5575

PRODUCTS AT A GLANCE



Products listed are common Kalas products; other products are available upon request.
Please contact sales or customer service for your special requests.

AUTOMOTIVE

AUTO DUPLEX

Inner Conductors
PVC 80°C - 105°C
Jacket
PVC 80°C - 105°C
18/2 - 10/2 gauge

AUTO TRIPLEX

Inner Conductors
PVC 80°C - 105°C
Jacket
PVC 80°C - 105°C
18/3 - 10/3 gauge

AUTO QUADRUPLUX

Inner Conductors
PVC 80°C - 105°C
Jacket
PVC 80°C - 105°C
16/4, 14/4 gauge

BOOSTER DUPLEX CABLE

PVC or TPE up to 105°C
10/2 - 1/0-2 gauge

BATTERY CABLE 60 VOLTS DC

SGT
SGR
UL SGR 105°C (UL4127)
SGX
Meets SAE J1127
6 gauge - 4/0

PRIMARY WIRE 60 VOLTS DC

GPT
TWP
Meets SAE J1128
18 - 8 gauge

MULTIPLE CONDUCTOR TRAILER CABLE

Made with SAE Innors
PVC or TPE Jacket
80°C or 105°C
Low Temperature -40°C
Mixed gauges; Made to customer specifications;
No Kalas standard

FLEXIBLE CORD

600V SERVICE CORD

ST, STO, STOO, STW, STOW, STOOW
PVC Jacket, PVC Innors
60°C or 105°C -40°C
18 - 4 AWG; 2-4 conductors.
Also available with greater than
4 conductors

300V SERVICE CORD

SJT, SJTO, SJTOO, SJTW, SJTOW,
SJTOOW
PVC Jacket, PVC Innors
60°C or 105°C -40°C
18 - 10 AWG; 2-4 conductors.
Also available with greater than
4 conductors

300V SERVICE CORD

SJE, SJEQ, SJEQO, SJEW, SJEOW,
SJEOWW
TPE Jacket, PVC Innors
105°C -40°C or -50°C
18 - 10 AWG; 2-4 conductors
Also available with greater than
4 conductors

600V SERVICE CORD

SE, SEO, SEQO, SEOW, SEOWW
TPE Jacket, TPE Innors
105°C -40°C or -50°C
18 - 4 AWG; 2-4 conductors
Also available with greater than
4 conductors

RV AND MOBILE HOME

STW, STOW and STOOW:
Please see Marine and
Recreation

VACUUM CLEANER CORD

SVT
PVC
60°C or 105°C
300 Volts
18/3 - 16/3 AWG
18/2 - 16/2 AWG

MARINE / RECREATION

BOAT CABLE

SINGLE CONDUCTOR

PVC
105°C Dry 75°C Wet (BC5W2)
600 Volts
16 AWG - 4/0

BOAT CABLE MULTI-CONDUCTOR FLAT

PVC
105°C Dry 75°C Wet (BC5W2)
600 Volts
18 - 4 AWG; 2-3 conductors

BOAT CABLE MULTI-CONDUCTOR ROUND

PVC
105°C Dry 75°C Wet (BC5W2)
600 Volts
18 - 6 AWG
Contact Sales for # of conductor's

MARINE BATTERY

CABLE SGT

SAE J328
PVC 105°C -40°C
60 Volts DC
6 gauge - 4/0

MARINE PRIMARY

WIRE GPT

SAE J328
PVC 105°C -40°C
60 Volts DC
18 - 8 gauge

CONSTRUCTION WIRE

UF-B WITH GROUND

PVC/Nylon Conductors with
PVC Jacket
Sunlight Resistant
90°C
600 Volts
14 - 6 AWG

KALAS MAILING ADDRESS

167 Greenfield Road
Lancaster, PA 17601

TULSA WAREHOUSE

1810 East Jasper St.
Tulsa, Oklahoma 74110

KALASWIRE.COM

P 717-336-5575

KALAS | PUMP CABLE

KALAS MAILING ADDRESS

167 Greenfield Road
Lancaster, PA 17601

TULSA WAREHOUSE

1810 East Jasper St.
Tulsa, Oklahoma 74110

KALASWIRE.COM

P 717-336-5575